

2020
RANGER

COMMERCIAL | XL | XLS | XLT | LIMITED | WILDTRAK



THE TOTAL PACKAGE.

Ford Ranger was designed to handle whatever you throw at it – or in it. And like you, Ranger has an unrelenting desire to get out and exercise its freedom for adventure. With 2 body styles – Regular Cab and Double Cab – and 6 trim levels to choose from, along with 3 engine choices, you're never short on having the perfect truck to take you away – far, far away.



NEW GRILLE DESIGN

Wide, air-gulping grille blends style and function.

12.7^{-M}
TURNING
CIRCLE⁴

3,500^{-KG}
MAXIMUM
TOWING CAPACITY²

347
LB.-FT. OF
TORQUE³



TAILGATE WITH LIFT ASSIST¹
helps make raising the tailgate a little easier.

European model shown.

XLT Double Cab 4x4. Lightning Blue. ¹Available feature. ²When properly configured. Passenger and cargo capacity limited by weight and weight distribution. ³3.2L diesel engine. ⁴Single Cab is 12.0 m. Vehicles throughout this publication may be shown with optional and aftermarket upfit equipment and without standard antenna.

2020 RANGER | COMMERCIAL | XL | XLS | XLT | LIMITED | WILDTRAK

caribe.ford.com | centroamerica.ford.com



RUGGEDLY SATISFYING.

Even when you're roughing it. Whether it's work or play, well-equipped convenience features offer a comforting experience in Ranger. Courtesy of leather-trimmed seating¹ with 8-way adjustable driver's seat,¹ leather-wrapped steering wheel,¹ and 2nd-row armrest. Diffused ambient lighting¹ creates a pleasant driving atmosphere at night. And multiple powerpoints and a 6-speaker audio system¹ ensure every drive is entertaining, no matter how long the journey may take.

8"
TOUCH-
SCREEN¹

2
USB PORTS¹

FRONT CENTER
ARMREST STORAGE¹

U.S. model shown.

DUAL-ZONE
ELECTRONIC
AUTOMATIC
TEMPERATURE
CONTROL¹

8-WAY
ADJUSTABLE
DRIVER'S SEAT¹

6-SPEAKER
AUDIO SYSTEM¹

REAR-SEAT STORAGE¹
U.S. model shown.

WILDTRAK Double Cab. Saber. Ebony Journey Grain Leather Trim. Available equipment. Screen display varies by market. ¹Available feature.

2020 RANGER | COMMERCIAL | XL | XLS | XLT | LIMITED | WILDTRAK

caribe.ford.com | centroamerica.ford.com





European model shown.

[2.2L DIESEL ENGINES]

HIGH- AND LOW-OUTPUT ENGINES

No matter what you're tasked to move, both diesel engines offer plenty of horsepower and torque capable of hauling you and your stuff.

LOW-OUTPUT
5-speed manual transmission
Available on COMMERCIAL

118

210

1,500

HIGH-OUTPUT
6-speed automatic transmission
Available on XLS, XLT

148

277

3,500

6-speed manual transmission
Available on XL, XLS, XLT

MAX.
HORSE-
POWER

MAX.
LB.-FT. OF
TORQUE

KG MAX.
TOWING
CAPACITY

[3.2L DIESEL ENGINES]

A TRUE WORKHORSE

When work or playtime requires more capable power to haul your entire crew – plus gear – the 3.2L cranks out an impressive amount of torque to power you through.

6-speed automatic transmission
Available on XLT
Standard on LIMITED, WILDTRAK

197

347

3,500

6-speed manual transmission
Available on XLT

MAX.
HORSE-
POWER

MAX.
LB.-FT. OF
TORQUE

KG MAX.
TOWING
CAPACITY

XLT Double Cab 4x4. Lightning Blue. Available equipment.

2020 RANGER | COMMERCIAL | XL | XLS | XLT | LIMITED | WILDTRAK

caribe.ford.com | centroamerica.ford.com



CARVE YOUR OWN TRAIL.

When you have the urge to take the rubber off-road, Ranger has the toughness and technology to go beyond the asphalt. The available 4-wheel-drive shift-on-the-fly system allows you to alter your terrain management needs with a simple – and quick – twist of the dial. Add an impressive ride height and wading depth, and Ranger has the means to traverse some of the most rugged and washed-out landscapes – increasing its trail-worthiness.



800-MM
WADING
DEPTH²

THE RANGER 4-WHEEL-DRIVE SYSTEM incorporates electronic shift-on-the-fly (ESOF)¹ to let you move smoothly from rear-wheel drive to 4-wheel drive without having to stop the vehicle.



2H

Rear-wheel drive to help maximize fuel economy on paved roads.

4H

4-wheel drive (4WD) for driving on unpaved roads.

4L

4WD with lower gear ratios for more challenging conditions.



WILDTRAK Double Cab 4x4. Frozen White. Available equipment shown. ¹Available feature. ²Figure is for LIMITED and WILDTRAK 4x4 models.



PURPOSELY EQUIPPED.

Outfitted with convenient features like Intelligent Access with push-button start¹ means you won't have to fumble with keys, while audio, cruise and voice-activation controls are conveniently located on the steering wheel so you can focus on the road. Navigation^{1,2} and climate controls are all in plain sight and easy to reach.

**INTELLIGENT ACCESS WITH
PUSH-BUTTON START¹**

POWER DOOR LOCKS

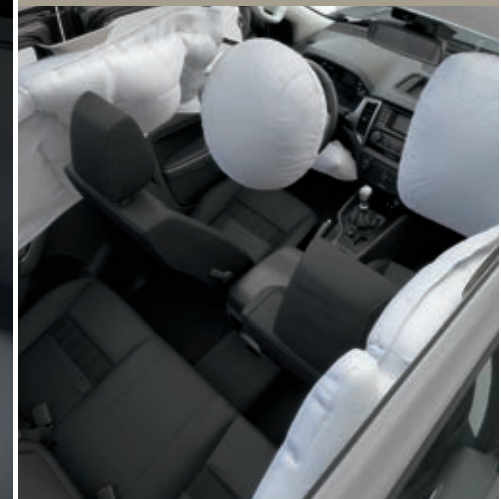
**AUTO-DIMMING REARVIEW
MIRROR¹**



U.S. model shown.

PROTECTION FROM ALL SIDES

Smartly engineered with your safety in mind, Ranger is equipped with driver and front-passenger front airbags¹, front-seat side airbags¹ and a driver's knee airbag¹.



LIMITED Double Cab. Copper Red. Ebony Soho Grain Leather Trim. Available equipment. ¹Available feature. ²Availability varies by market.



European model shown.

NEVER REALLY OFF-THE-GRID.

This vibrant 8" touchscreen is the command center of SYNC® 3 voice-activated technology,^{1,2} which integrates your paired mobile phone with Ford Ranger. Make calls. Send and receive text messages. And so much more. Just swipe left or right, or use simple voice commands, to help ensure that your life doesn't miss a beat.



androidauto

SPEAK AND SYNC LISTENS

With your voice and your choice of display, SYNC 3 voice-activated technology^{1,2} connects your tech with your Ranger, and puts you smartly in control with simple voice commands, or a quick tap or swipe of its standard 8" touchscreen. SYNC AppLink³ gives you voice control of compatible mobile apps, too. Rather see your phone's familiar interface⁴ on the big screen? Take your pick.



MAP YOUR ROUTE

Voice-activated navigation^{1,2,5} delivers turn-by-turn directions and vivid 3-D maps on the SYNC 3 touchscreen. Pinch-to-zoom capability allows for a closer look.

¹Available feature. ²Don't drive while distracted. Use voice-operated systems when possible; don't use handheld devices while driving. Some features may be locked out while the vehicle is in gear. Not all features are compatible with all phones. Functionality varies by market. ³Certain restrictions, 3rd-party terms and data rates may apply. See your Ford Dealer for details. Commands may vary by phone and AppLink software. ⁴Requires phone with active data service and compatible software. SYNC does not control 3rd-party products while in use. 3rd parties are solely responsible for their respective functionality. ⁵Availability varies by market.

Android Auto, Waze and logos are trademarks of Google Inc. Apple CarPlay is a trademark of Apple Inc., registered in the U.S. and other countries.

2020 RANGER | COMMERCIAL | XL | XLS | XLT | LIMITED | WILDTRAK

caribe.ford.com | centroamerica.ford.com



ON-ROAD ASSISTANCE

Ford Ranger is equipped with the latest driver-assist technology, which is always looking out for you as you traverse the concrete jungle. Like Adaptive Cruise Control^{1,2} that can maintain a safe distance, Assisted Parallel Parking^{1,2} to help you park, and a Rear View Camera¹ that shows you what's behind Ranger. So you can park it, and get on with the fun.



READY WITH AN ASSIST.?



RAIN-SENSING WINDSHIELD WIPERS

can be set to automatically help keep the view out of your windshield clear.

Standard on XLS, XLT, LIMITED, WILDTRAK



ADAPTIVE SPEED CONTROL

This next-level cruise control system helps you keep pace on your journey and can slow down or stop your vehicle if the traffic ahead has slowed or stopped. When things clear, you'll resume your set speed. Lane Centering² helps keep Ranger between the lines.

Standard on WILDTRAK



REVERSE SENSING SYSTEM

Sensors in the rear bumper send audible alerts to warn you if you're getting too close to an object. The closer you get, the more rapid they become. And if it detects that you are in range of an object, you'll hear a solid tone.

Standard on XLT, XLS, LIMITED, WILDTRAK
Optional on COMMERCIAL (LHD)



REAR VIEW CAMERA

Backing up requires a little multitasking. Our Rear View Camera helps by providing a great view of what's behind your vehicle. A washer helps keep it free of debris (like dirt or snow), helping you navigate Reverse clearly and with more confidence.

Standard on XLS, XLT, LIMITED, WILDTRAK
Optional on COMMERCIAL (LHD)



ASSISTED PARALLEL PARKING

Parallel parking can now be automatic. Simply push a button and sensors can locate a suitable space. The system will then automatically steer you in, while you operate the accelerator, brake and gears.

Standard on LIMITED, WILDTRAK (LHD)

WILDTRAK Double Cab 4x4. Saber. Available equipment. ¹Available feature. ²Driver-assist features are supplemental and do not replace the driver's attention, judgment and need to control the vehicle.

2020 RANGER | COMMERCIAL | XL | XLS | XLT | LIMITED | WILDTRAK

caribe.ford.com | centroamerica.ford.com



REGULAR CAB

1,052-KG
MAXIMUM
GROSS PAYLOAD
CAPACITY

1.8 CU M
MAXIMUM
CARGO AREA

CARGO BOX AREA

2,317 mm LONG
1,139 mm WIDTH AT WHEEL WELLS



DOUBLE CAB

1,043-KG
MAXIMUM
GROSS PAYLOAD
CAPACITY

1.18 CU M
MAXIMUM
CARGO AREA

CARGO BOX AREA

1,549 mm LONG
1,139 mm WIDTH AT WHEEL WELLS



FREEDOM OF CHOICE.

Regular Cab is the perfect choice if your main priority is having a generous load-carrying capacity, and you only need seating for 3. That just means you have more exterior cargo capacity with a 2,317-mm-long bed. So what would normally require two trips may now just take one.

With comfortable seating for up to 5 adults, Double Cab offers the most car-like ownership experience of all the Ranger body styles. And with a 1,549-mm-long cargo box, it is equally accommodating whether you're hard at work or enjoying time off with friends and family.

COMMERCIAL Regular Cab 4x2. Moondust Silver. WILDTRAK Double Cab 4x4. Moondust Silver. Available equipment.

AVAILABLE BODY STYLES

Series	Regular Cab	Double Cab
COMMERCIAL	●	●
XL		●
XLS		●
XLT		●
LIMITED		●
WILDTRAK		●



WILDTRAK Double Cab 4x4. Saber. Available equipment.

DIMENSIONS

	Regular Cab 4x2	Double Cab 4x2/4x4
Drivetrain	4x2	4x2/4x4
Cab (persons)	2, 3	5
Cargo box volume (cu m)	1.8	1.18
Gross payload capacity (kg)	Up to 1,052	Up to 1,043
CARGO BOX (mm)		
Height	511	511
Width	1,560	1,560
Width (between wheel wells)	1,139	1,139
Length	2,317	1,549
INTERIOR (Front/Rear) (mm)		
Head room	1,024	1,022/975
Leg room	1,058	1,058/902
Shoulder room	1,437	975/1,430
EXTERIOR (mm)		
Height	1,703	1,851
Width	1,860	1,860
Length	5,354	5,354
Wheelbase	3,220	3,220
Ground clearance	135	237

Ford Genuine Parts & Service. Keep your vehicle in optimum operating condition with scheduled maintenance service. Ford and Lincoln Dealership technicians know your vehicle inside and out. They are continuously trained by Ford Motor Company and the parts they use are specifically designed for your vehicle. □ See your dealer for limited warranty information on Ford Original Accessories. Ford Licensed Accessories (FLA) are warranted by the accessory manufacturer’s warranty. FLA are designed and developed by the accessory manufacturer and have not been designed or tested to Ford Motor Company engineering requirements. Contact your Ford Dealer for details and/or a copy of all limited warranties.

Vehicles may be shown with optional equipment which may or may not be available in your market. Features may be offered only in combination with other options or subject to additional ordering requirements/ limitations. Dimensions shown may vary due to optional features and/or production variability. Information is provided on an “as is” basis and could include technical, typographical or other errors. Ford makes no warranties, representations, or guarantees of any kind, express or implied, including but not limited to, accuracy, currency, or completeness, the operation of the information, materials, content, availability, and products. Ford reserves the right to change product specifications, pricing and equipment at any time without incurring obligations. Your Ford or Lincoln Dealer is the best source of the most up-to-date information on Ford and Lincoln vehicles.

©2019 Ford Motor Company



COMMERCIAL



Asia-Pacific model shown.

Double Cab 4x4. Frozen White. Available equipment.



SMALL TRUCK, BIG CAPABILITY.

When there's work to be done, Ford Ranger COMMERCIAL is more than capable. A heavy-duty body construction and 2.2L diesel low-output engine matched with a 5-speed manual transmission are the backbone of this rugged work truck. Tie-down hooks in the truck bed help ensure your cargo is secure.

LIMITED-SLIP REAR AXLE (4x4)

AUTOMATIC HEADLAMP CONTROL (OFF ONLY)

INTERMITTENT WINDSHIELD WIPERS



COMMERCIAL

STANDARD RANGER FEATURES:

MECHANICAL

4x2 drivetrain (Regular Cab)

4x4 drivetrain (Double Cab)

80-liter fuel tank capacity

INTERIOR

Assist handles for driver and front passenger

Dome light with theater dimming and illuminated entry

ICE Pack 10: includes AM/FM stereo, USB port and 2 speakers

Smoker's Pack – Ash cup and cigar lighter

EXTERIOR

Autolamp automatic off headlamps

Dual-note horn

Inner load box tie-downs

Locking fuel cap

Pickup box tie-down hooks

Single front tow hook

SAFETY & SECURITY

Safety belts

PACKAGE

Engineered Trim Pack 25: includes open-style rear axle (4x2); limited-slip rear axle (4x4); black front fender gills; **Security Lock Group 1** with 2 manual keys; manual tailgate lock; **Safety Pack 3** with driver's front airbag,¹ light frame and 4-wheel Anti-Lock Brake System (ABS); black grille, door handles, liftgate handle and sideview mirror caps; vinyl flooring; **Front Seat Pack 4** with 2-way manual driver's seat and Belt-Minder®; **Rear Seat Pack 5** with 2nd-row bench seat (Double Cab); variable-speed intermittent windshield wipers; and manual air conditioning



16" x 7" Steel
Standard

EBONY PACE CLOTH

FROZEN WHITE

MOONDUST SILVER²

DIFFUSED SILVER²

COLORADO RED

COPPER RED²

LIGHTNING BLUE²

SEA GREY²

ABSOLUTE BLACK

POWERTRAIN

2.2L LOW-OUTPUT I-4 DIESEL

118 max. hp

210 lb.-ft. of max. torque

5-speed manual transmission

Restrictions may apply. See your dealer for details. Colors are representative only. See your dealer for actual paint/trim options.

¹Always wear your safety belt and follow airbag warning label instructions. ²Metallic.



XL



Double Cab 4x4. Lightning Blue. Ebony Circuit Cloth. Available equipment.



THERE'S A RANGER FOR EVERYONE

no matter what your life entails. Power windows with one-touch-up/-down driver's side and power-adjustable sideview mirrors offer convenience. With a 4x4 drivetrain with electronic shift-on-the-fly (LHD), and seating for up to 5 passengers, XL is flexible enough to be the perfect work and family truck.

REAR SEAT PACK 11 INCLUDES
2ND-ROW BENCH SEAT, 3-POINT SAFETY BELTS
AND REAR CENTER ARMREST

FRONT-PASSENGER SUN VISOR MIRROR

VOLUMETRIC ALARM



XL

INCLUDES SELECT COMMERCIAL FEATURES, PLUS:

MECHANICAL

4x2 drivetrain (RHD)

4x4 drivetrain with electronic shift-on-the-fly

Limited-slip rear axle (4x4)

SEATING

Front Seat Pack 4: includes 2-way manual driver's seat and Belt-Minder®

Rear Seat Pack 11: includes 2nd-row bench seat, 3-point safety belts, ISOFIX hard point attachment, and rear center armrest

INTERIOR

Front center console with double lid

Front-passenger sun visor mirror

ICE Pack 34: includes AM/FM stereo with low-series cluster, USB port and 4 speakers (LHD)

ICE Pack 51: includes AM/FM stereo with SYNC® mid-series cluster, USB port and 6 speakers (RHD)

Manual air conditioning

Non-woven carpet flooring

EXTERIOR

Body-color front bumper and black rear bumper

Front and rear mud flaps

Non-locking fuel cap

Power-adjustable/manual-folding sideview mirrors with black caps

Variable-speed intermittent windshield wipers

Volumetric alarm

SAFETY & SECURITY

Safety Pack 6: includes heavy-duty body construction, driver and front-passenger front airbags,¹ heavy frame and 4-wheel Anti-Lock Brake System (ABS)

Security Lock Group 2: includes flip key

AVAILABLE FEATURE:

4x4 drivetrain with electronic shift-on-the-fly (RHD)



16" x 7" Steel Standard

EBONY CIRCUIT CLOTH

FROZEN WHITE

MOONDUST SILVER²

DIFFUSED SILVER²

COLORADO RED

COPPER RED²

LIGHTNING BLUE²

SEA GREY²

ABSOLUTE BLACK

POWERTRAIN

2.2L HIGH-OUTPUT I-4 DIESEL

148 max. hp

277 lb.-ft. of max. torque

6-speed manual transmission

Restrictions may apply. See your dealer for details. Colors are representative only. See your dealer for actual paint/trim options.
¹Always wear your safety belt and follow airbag warning label instructions. ²Metallic.



XLS



A LITTLE MORE GOES A LONG WAY in Ranger XLS. Packed full of standard features that help make every second behind the wheel enjoyable, like: cruise control, Rear View Camera, Reverse Sensing System, automatic headlamps, and AM/FM stereo with SYNC® technology.

CRUISE CONTROL

ICE PACK 56 INCLUDES
AM/FM STEREO WITH SYNC, MID-SERIES
CLUSTER, USB PORT AND 6 SPEAKERS

REAR VIEW CAMERA

INCLUDES SELECT XL FEATURES, PLUS:

MECHANICAL

4x4 drivetrain with electronic shift-on-the-fly

SEATING

Front Seat Pack 31: includes 4-way manual driver's seat, Belt Minder®, and front-seat side airbags¹

Rear Seat Pack 11

INTERIOR

Auto-dimming rearview mirror

Cruise control

ICE Pack 56: includes AM/FM stereo with SYNC, mid-series cluster, USB port and 6 speakers

Interior Trim Pack 22 with limestone headliner, cloth door-trim inserts, and leather-wrapped shift knob

Power-adjustable/manual-folding sideview mirrors

Power front windows with one-touch-up/-down

EXTERIOR

Accent-color grille

Autolamp automatic on/off headlamps

Black front fender gills

Body-color rear bumper (RHD)

Chrome rear bumper (LHD)

Daytime running lamps

Fog lamps

Rain-Sensing Windshield Wipers

Rear parking sensors

Rear View Camera

Step bars

Tailgate lock

Version Pack 3 with front and rear splash guards, and mud flaps (LHD)

SAFETY & SECURITY

Safety Pack 11: includes heavy-duty body construction, light frame and Electronic Stability Control (ESC)

Security Lock Group 2: includes flip key

POWERTRAIN

2.2L HIGH-OUTPUT I-4 DIESEL

148 max. hp

277 lb.-ft. of max. torque

6-speed manual transmission
AVAILABLE

6-speed automatic transmission
AVAILABLE



16" 6-Spoke Aluminum
Standard

EBONY CIRCUIT CLOTH

FROZEN WHITE

MOONDUST SILVER²

DIFFUSED SILVER²

COLORADO RED

COPPER RED²

LIGHTNING BLUE²

SEA GREY²

ABSOLUTE BLACK

Double Cab 4x4. Absolute Black. Ebony Circuit Cloth. Available equipment. Restrictions may apply. See your dealer for details. Colors are representative only. See your dealer for actual paint/trim options.

¹Always wear your safety belt and follow airbag warning label instructions. ²Metallic.



XLT



THE RIGHT STUFF. A little extra comfort can turn a good day on the trail into a great day. Dual-zone electronic automatic temperature control and available leather-trimmed seats put XLT on a whole new level. Top it off with a spirited standard 148-hp 2.2L high-output diesel engine, and you're now prepared to go beyond the tree line.

DUAL-ZONE ELECTRONIC AUTOMATIC TEMPERATURE CONTROL (DEATC)

ICE PACK 77 INCLUDES
AM/FM STEREO WITH SYNC® 3,
8" TOUCHSCREEN, HIGH-SERIES CLUSTER,
2 USB PORTS AND 6 SPEAKERS

CHROME GRILLE, DOOR HANDLES
AND REAR BUMPER

INCLUDES SELECT XLS FEATURES, PLUS:

MECHANICAL

4x2 drivetrain (RHD)

4x4 drivetrain with electronic shift-on-the-fly

SEATING

Front Seat Pack 47: includes 4-way manual driver's seat with seat back map pocket, front-seat side airbags¹ and Belt-Minder®

Rear Seat Pack 11

INTERIOR

Dual-zone electronic automatic temperature control (DEATC)

ICE Pack 77: includes AM/FM stereo with SYNC 3, 8" touchscreen, high-series cluster, 2 USB ports and 6 speakers

Speed control and automatic speed-limiting device (ASLD)

EXTERIOR

Chrome grille, front fender gills, door handles, tailgate handle and rear bumper

Chrome side steps

Power-adjustable sideview mirrors with turn signal indicators and chrome caps

Power tailgate lock

Sports bar

Spray-in bedliner

Tailgate with lift assist

SAFETY & SECURITY

Safety Pack 16: includes heavy-duty body construction, low-speed crash foam in front bumper, driver and front-passenger front airbags², driver's knee airbag², heavy frame, front-passenger front airbag disable light, and Electronic Stability Control (ESC)

Security Group 5: includes Intelligent Access with push-button start and 2 key fobs

POWERTRAINS

2.2L HIGH-OUTPUT I-4 DIESEL

148 max. hp

277 lb.-ft. of max. torque

6-speed manual transmission
AVAILABLE: RHD

6-speed automatic transmission
AVAILABLE

3.2L I-5 DIESEL

187 max. hp

347 lb.-ft. of max. torque

6-speed manual transmission
AVAILABLE: LHD

6-speed automatic transmission
AVAILABLE



17" 6-Spoke Aluminum
Standard

EBONY PENTA CLOTH

EBONY SOHO GRAIN LEATHER

FROZEN WHITE

MOONDUST SILVER²

DIFFUSED SILVER²

COLORADO RED³

COPPER RED²

LIGHTNING BLUE²

SEA GREY²

ABSOLUTE BLACK

Double Cab 4x4. Frozen White. Ebony Soho Grain Leather Trim. Available equipment. Restrictions may apply. See your dealer for details. Colors are representative only. See your dealer for actual paint/trim options.

¹Always wear your safety belt and follow airbag warning label instructions. ²Metallic. ³Not available with Ebony Penta cloth on RHD.



LIMITED^(LHD)



THERE ARE NO LIMITS to where you can go in Ranger LIMITED. The pinnacle of the Ranger lineup is loaded with the best of all models. Plus, a bright chrome sports bar, as well as chrome steel steps and rear bumper, give it a striking appearance. A leather-trimmed 8-way power-adjustable driver's bucket seat with lumbar support, brushed-aluminum accents, and SYNC® 3 with an 8" color touchscreen offer premium flair that perfectly compliments its rugged demeanor.

ASSISTED PARALLEL PARKING

FRONT SEAT PACK 51 INCLUDES
8-WAY MANUAL DRIVER'S SEAT WITH SEAT BACK
MAP POCKET, SIDE AIRBAGS¹ AND BELT-MINDER®

POWER-ADJUSTABLE/POWER-FOLDING SIDEVIEW
MIRRORS WITH TURN SIGNAL INDICATORS, PUDDLE
LAMPS AND CHROME CAPS

Double Cab 4x4. Moondust Silver. Ebony Soho Grain Leather Trim. Available equipment. ¹Always wear your safety belt and follow airbag warning label instructions.



LIMITED (LHD)

INCLUDES SELECT XLT FEATURES, PLUS:

MECHANICAL

4x4 drivetrain with electronic shift-on-the-fly

SEATING

Front Seat Pack 51: includes 8-way manual driver's seat with seat back map pocket, front-seat side airbags¹ and Belt-Minder[®]

Rear Seat Pack 11

INTERIOR

ICE Pack 77: includes AM/FM stereo with SYNC[®] 3, 8" touchscreen, high-series cluster, 2 USB ports and 6 speakers

Power converter

EXTERIOR

Assisted Parallel Parking

Power-adjustable/power-folding sideview mirrors with turn signal indicators, puddle lamps and chrome caps

SAFETY & SECURITY

Safety Pack 7: includes heavy-duty body construction, driver's knee airbag,¹ light frame, front-passenger airbag disable light, and Electronic Stability Control (ESC)

Security Lock Group 5: Includes Intelligent Access with push-button start and 2 key fobs

Security Lock Group 2: includes flip key



17" 6-Spoke Aluminum
Standard

EBONY SOHO GRAIN LEATHER

FROZEN WHITE

MOONDUST SILVER²

DIFFUSED SILVER²

COLORADO RED

COPPER RED²

LIGHTNING BLUE²

SEA GREY²

ABSOLUTE BLACK

POWERTRAIN

3.2L I-5 DIESEL

197 max. hp

347 lb.-ft. of max. torque

6-speed automatic transmission

Restrictions may apply. See your dealer for details. Colors are representative only. See your dealer for actual paint/trim options.

¹Always wear your safety belt and follow airbag warning label instructions. ²Metallic.



WILDTRAK



South African model shown.

PUTS THE WILD IN WILDERNESS.

When the call of the wild beckons, count on Ranger WILDTRAK to answer with confident enthusiasm. Constructed of a heavy-duty body and frame, fastened with 18" all-terrain wheels and tires — plus a 4x4 drivetrain with electronic shift-on-the-fly mated to a potent 197-hp 3.2L diesel engine — WILDTRAK will give you all the confidence you need to take it off the asphalt. And available SYNC® 3 Navigation will help get you anywhere there are paved roads — but you're on your own after that. Best yet, you can do it while driving in total comfort, courtesy of leather-trimmed seats with 8-way driver's seat adjustment.

ADAPTIVE SPEED CONTROL

ACCENT-COLOR GRILLE AND DOOR HANDLES

SECURITY GROUP 5 INCLUDES
INTELLIGENT ACCESS WITH PUSH-BUTTON START
AND 2 KEY FOBS

Double Cab 4x4. Saber. Ebony Journey Grain Leather Trim. Available equipment.

2020 RANGER | COMMERCIAL | XL | XLS | XLT | LIMITED | WILDTRAK

caribe.ford.com | centroamerica.ford.com



WILDTRAK

INCLUDES SELECT XLT FEATURES, PLUS:

MECHANICAL

4x4 drivetrain with electronic shift-on-the-fly

SEATING

Front Seat Pack 51: includes 8-way manual driver's seat with seat back map pocket, front-seat side airbags¹ and Belt-Minder[®]

Rear Seat Pack 11

INTERIOR

ICE Pack 77: includes AM/FM stereo with SYNC[®] 3, 8" touchscreen, high-series cluster, 2 USB ports and 6 speakers

EXTERIOR

Accent-color grille and door handles

Adaptive speed control

Assisted Parallel Parking (LHD)

Painted front fender gills and accent-color steel step rear bumper

Functional Upgrade Pack 20: includes pickup box side rails, cab rollover bar, Cargo Management System, less load rest, and roll-top tonneau cover

SAFETY & SECURITY

Safety Pack 7: includes heavy-duty body construction, driver's knee airbag,¹ light frame, front-passenger airbag disable light, and Electronic Stability Control (ESC) (LHD)

Safety Pack 16: includes heavy-duty body construction, low-speed crash foam in bumper, driver and front-passenger front airbags,¹ driver's knee airbag,¹ heavy frame, front-passenger airbag disable light, and Electronic Stability Control (ESC) (RHD)

Security Group 5: includes Intelligent Access with push-button start and 2 key fobs

AVAILABLE PACKAGE:

ICE Pack 104: includes AM/FM stereo with SYNC 3, Navigation, 8" touchscreen, high-series cluster, 2 USB ports and 6 speakers (RHD)



18" 6x2-Spoke Aluminum
Standard

EBONY JOURNEY GRAIN LEATHER

FROZEN WHITE
(NOT AVAILABLE ON LHD)

MOONDUST SILVER²

SABER²

SEA GREY²

ABSOLUTE BLACK

POWERTRAIN

3.2L I-5 DIESEL

197 max. hp

347 lb.-ft. of max. torque

6-speed automatic transmission

Restrictions may apply. See your dealer for details. Colors are representative only. See your dealer for actual paint/trim options.

¹Always wear your safety belt and follow airbag warning label instructions. ²Metallic.

